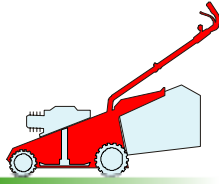


## TD 484 ROLLER

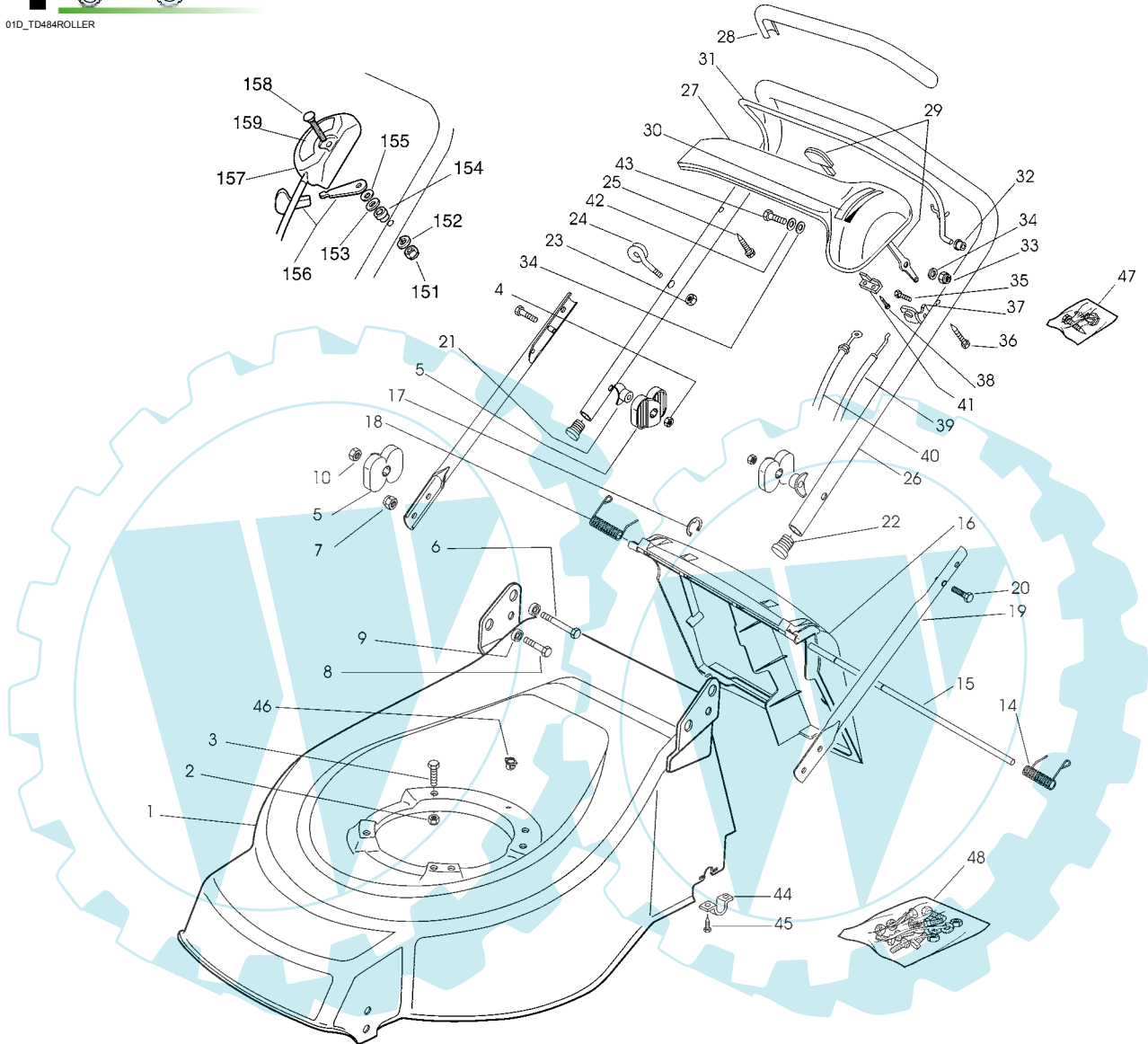


GLOBAL GARDEN PRODUCTS

1



01D\_TD484ROLLER



| Pos. | Code       | Q.ty | Descrizione   | Description | Description   | Beschreibung | Remarks |
|------|------------|------|---------------|-------------|---------------|--------------|---------|
| 1    | 81002565/0 | 1    | CHASSIS ROSSO | DECK RED    | CHÂSSIS ROUGE | GEHÄUSE ROT  |         |
| 2    | 12155000/0 | 0/1  | DADO          | NUT         | ECROU         | MUTTER       |         |
| -    | 12293201/0 | 3/2  | DADO          | NUT         | ECROU         | MUTTER       |         |
| 3    | 12793701/0 | 3/2  | VITE          | SCREW       | VIS           | SCHRAUBE     |         |
| -    | 12691800/0 | 0/1  | VITE          | SCREW       | VIS           | SCHRAUBE     |         |
| 4    | 12293202/0 | 2    | DADO          | NUT         | ECROU         | MUTTER       |         |
| 5    | 22399803/0 | 4    | MANOPOLINA    | KNOB        | POIGNÉE       | GRIF         |         |
| 6    | 12793700/0 | 2    | VITE          | SCREW       | VIS           | SCHRAUBE     |         |
| 7    | 12155000/0 | 2    | DADO          | NUT         | ECROU         | MUTTER       |         |
| 8    | 12792610/0 | 2    | VITE          | SCREW       | VIS           | SCHRAUBE     |         |
| 9    | 22041955/0 | 4    | BUSSOLA       | BUSH        | DOUILLE       | BUCHSE       |         |
| 10   | 12293200/0 | 2    | DADO          | NUT         | ECROU         | MUTTER       |         |
| 14   | 22450420/1 | 1    | MOLLA SX      | L SPRING    | RESSORT G     | LINKE FEDER  |         |
| 15   | 22517906/1 | 1    | PERNO         | PIN         | PIVOT         | BOLZEN       |         |
| 16   | 22600063/1 | 1    | PARASASSI     | STONE-GUARD | PARE-PIERRES  | PRALLBLECH   |         |

## TD 484 ROLLER



97

## GLOBAL GARDEN PRODUCTS

| Pos. | Code       | Q.ty | Descrizione                 | Description               | Description                | Beshreibung             | Remarks                    |
|------|------------|------|-----------------------------|---------------------------|----------------------------|-------------------------|----------------------------|
| 17   | 12000930/0 | 1    | ANELLO ELASTICO             | SNAP RING                 | ANNEAU RESSORT             | SPRENGRING              |                            |
| 18   | 22450410/1 | 1    | MOLLA DX                    | R SPRING                  | RESSORT D                  | RECHTE FEDER            |                            |
| 19   | 81006973/0 | 2    | MANICO INFERIORE            | HANDLE, LOWER PART        | MANCHERON INFERIEURE       | HOLM, UNTERTEIL         |                            |
| 20   | 12819125/0 | 2    | VITE                        | SCREW                     | VIS                        | SCHRAUBE                |                            |
| 21   | 22680006/1 | 2    | ROSETTA                     | WASHER                    | RONDELLE                   | SCHEIBE                 |                            |
| 22   | 18566112/0 | 2    | PUNTALE                     | CAP                       | BOUCHON                    | GUMMISTOPFEN            |                            |
| 23   | 12154330/0 | 1    | DADO                        | NUT                       | ECROU                      | MUTTER                  |                            |
| 24   | 22430309/0 | 1    | MOLLA GUIDA                 | GUIDE SPRING              | RESSORT DE GUIDE           | FEDER FÜHRER            |                            |
| 25   | 22943006/0 | 1    | VITE                        | SCREW                     | VIS                        | SCHRAUBE                |                            |
| 26   | 81006977/1 | 1    | MANICO SUPERIORE            | HANDLE, UPPER PART        | MANCHERON SUPERIEURE       | HOLM, OBERTEIL          |                            |
| 27   | 22120152/0 | 1    | CRUSCOTTO GIALLO            | DASH BOARD YELLOW         | CONSOLE JAUNE              | KONSOLE GELBE           |                            |
| -    | 22120158/0 | 1    | CRUSCOTTO NERO              | DASH BOARD BLACK          | CONSOLE NOIRE              | KONSOLE SCHWARZE        |                            |
| -    | 22120154/0 | 1    | CRUSCOTTO ROSSO             | DASH BOARD RED            | CONSOLE ROUGE              | KONSOLE ROTE            |                            |
| 28   | 22291052/0 | 1    | IMPUGNATURA MANICO GIALLA   | HANDGRIP YELLOW           | POIGNÉE JAUNE              | HANDGRIFF GELBER        |                            |
| -    | 22291050/0 | 1    | IMPUGNATURA MANICO NERA     | HANDGRIP BLACK            | POIGNÉE NOIRE              | HANDGRIFF SCHWARZER     |                            |
| -    | 22291051/0 | 1    | IMPUGNATURA MANICO ROSSA    | HANDGRIP RED              | POIGNÉE ROUGE              | HANDGRIFF RÖTER         |                            |
| 29   | 81007280/2 | 1    | LEVA, ACCELERATORE          | LEVER, THROTTLE           | LEVIER, ACCELERATEUR       | HEBEL, BESHLEUNIGER     |                            |
| 30   | 14356744/0 | 1    | ETICHETTA                   | LABEL                     | ETIQUETTE                  | ETIKETTE                | (B&S)                      |
| -    | 14356743/0 | 1    | ETICHETTA                   | LABEL                     | ETIQUETTE                  | ETIKETTE                | (HONDA)                    |
| -    | 14361129/0 | 1    | ETICHETTA                   | LABEL                     | ETIQUETTE                  | ETIKETTE                | (SUMEC)                    |
| -    | 14357646/0 | 1    | ETICHETTA                   | LABEL                     | ETIQUETTE                  | ETIKETTE                | (TECUMSEH)                 |
| 31   | 81003291/3 | 1    | LEVA FRENO MOTORE           | LEVER, MOTOR BRAKE        | LEVIER FREIN MOTEUR        | HEBEL, MOTORBREMSE      |                            |
| 32   | 22041966/0 | 2    | BUSSOLA                     | BUSH                      | DOUILLE                    | BUCHSE                  |                            |
| 33   | 12154510/0 | 1    | DADO                        | NUT                       | ECROU                      | MUTTER                  |                            |
| 34   | 12523040/0 | 2    | ROSETTA                     | WASHER                    | RONDELLE                   | SCHEIBE                 |                            |
| 35   | 12728518/0 | 1    | VITE                        | SCREW                     | VIS                        | SCHRAUBE                |                            |
| 36   | 12728460/0 | 1    | VITE                        | SCREW                     | VIS                        | SCHRAUBE                |                            |
| 37   | 22806612/0 | 1    | SUPPORTO                    | SUPPORT                   | SUPPORT                    | HALTER                  |                            |
| 38   | 12735105/0 | 2    | VITE                        | SCREW                     | VIS                        | SCHRAUBE                |                            |
| 39   | 81007160/0 | 1    | CAVO ACCELERATORE           | CABLE, TROTTLE            | CABLE, ACCELERATEUR        | KABEL, BESCHLEUNIGER    |                            |
| 40   | 81000625/0 | 1    | CAVO FRENO MOTORE           | CABLE, THREAD MOTOR BRAKE | CABLE FREIN MOTEUR         | KABEL, MOTORBREMSE      | (B&S CLASSIC/SPRINT/LS/LC) |
| -    | 81000631/0 | 1    | CAVO FRENO MOTORE           | CABLE, THREAD MOTOR BRAKE | CABLE FREIN MOTEUR         | KABEL, MOTORBREMSE      | (B&S QUANTUM)              |
| -    | 81000641/0 | 1    | CAVO FRENO MOTORE           | CABLE, THREAD MOTOR BRAKE | CABLE FREIN MOTEUR         | KABEL, MOTORBREMSE      | (HONDA GCV 135/160)        |
| -    | 81000611/0 | 1    | CAVO FRENO MOTORE           | CABLE, THREAD MOTOR BRAKE | CABLE FREIN MOTEUR         | KABEL, MOTORBREMSE      | (SUMEC)                    |
| -    | 81000629/1 | 1    | CAVO FRENO MOTORE           | CABLE, THREAD MOTOR BRAKE | CABLE FREIN MOTEUR         | KABEL, MOTORBREMSE      | (TECUMSEH)                 |
| 41   | 22981467/0 | 1    | PIASTRINA                   | PLATE                     | PLAQUETTE                  | PLÄTTCHEN               |                            |
| 42   | 12530060/0 | 1    | ROSETTA ELASTICA            | SPRING WASHER             | RONDELLE ELASTIQUE         | ELASTISCHE SCHEIBE      |                            |
| 43   | 12791500/0 | 1    | VITE                        | SCREW                     | VIS                        | SCHRAUBE                |                            |
| 44   | 22545154/0 | 2    | PIASTRINA                   | PLATE                     | PLAQUETTE                  | PLÄTTCHEN               |                            |
| 45   | 12731350/0 | 4    | VITE                        | SCREW                     | VIS                        | SCHRAUBE                |                            |
| 46   | 22291150/0 | 1    | INSERTO IN GOMMA            | RUBBER INSERT             | INSERT DE GAOUTCHOU        | GUMMI EINSATZ           |                            |
| 47   | 81008609/0 | 1    | DOTAZIONE VITERIA CRUSCOTTO | OUTFIT, DASH-BOARD SCREWS | DOTATION VISSERIE CONSOLLE | SATZ, KONSOLE SCHRAUBEN |                            |
| 48   | 81008640/0 | 1    | DOTAZIONE VITERIA           | OUTFIT, SCREWS            | DOTATION VISSERIE          | SATZ, SCHRAUBEN         |                            |

VARIANTE ACCELERATORE - THROTTLE MODIFICATION - MODIFICATION COMMANDE D'ACCELERATION - ÄNDERUNGEN AUF GASHEBEL

| Pos. | Code       | Q.ty | Descrizione        | Description     | Description          | Beshreibung         | Remarks |
|------|------------|------|--------------------|-----------------|----------------------|---------------------|---------|
| 151  | 12291000/0 | 1    | DADO               | NUT             | ECROU                | MUTTER              |         |
| 152  | 12581500/0 | 1    | GROWER             | GROWER          | GROWER               | FEDERRING           |         |
| 153  | 22171005/0 | 1    | DISTANZIALE        | SPACER          | ENTRETOISE           | DISTANZRING         |         |
| 154  | 12521360/0 | 1    | ROSETTA            | WASHER          | RONDELLE             | SCHEIBE             |         |
| 155  | 12508100/0 | 1    | ROSETTA ELASTICA   | SPRING WASHER   | RONDELLE ELASTIQUE   | ELASTISCHE SCHEIBE  |         |
| 156  | 81007279/1 | 1    | LEVA, ACCELERATORE | LEVER, THROTTLE | LEVIER, ACCELERATEUR | HEBEL, BESHLEUNIGER |         |

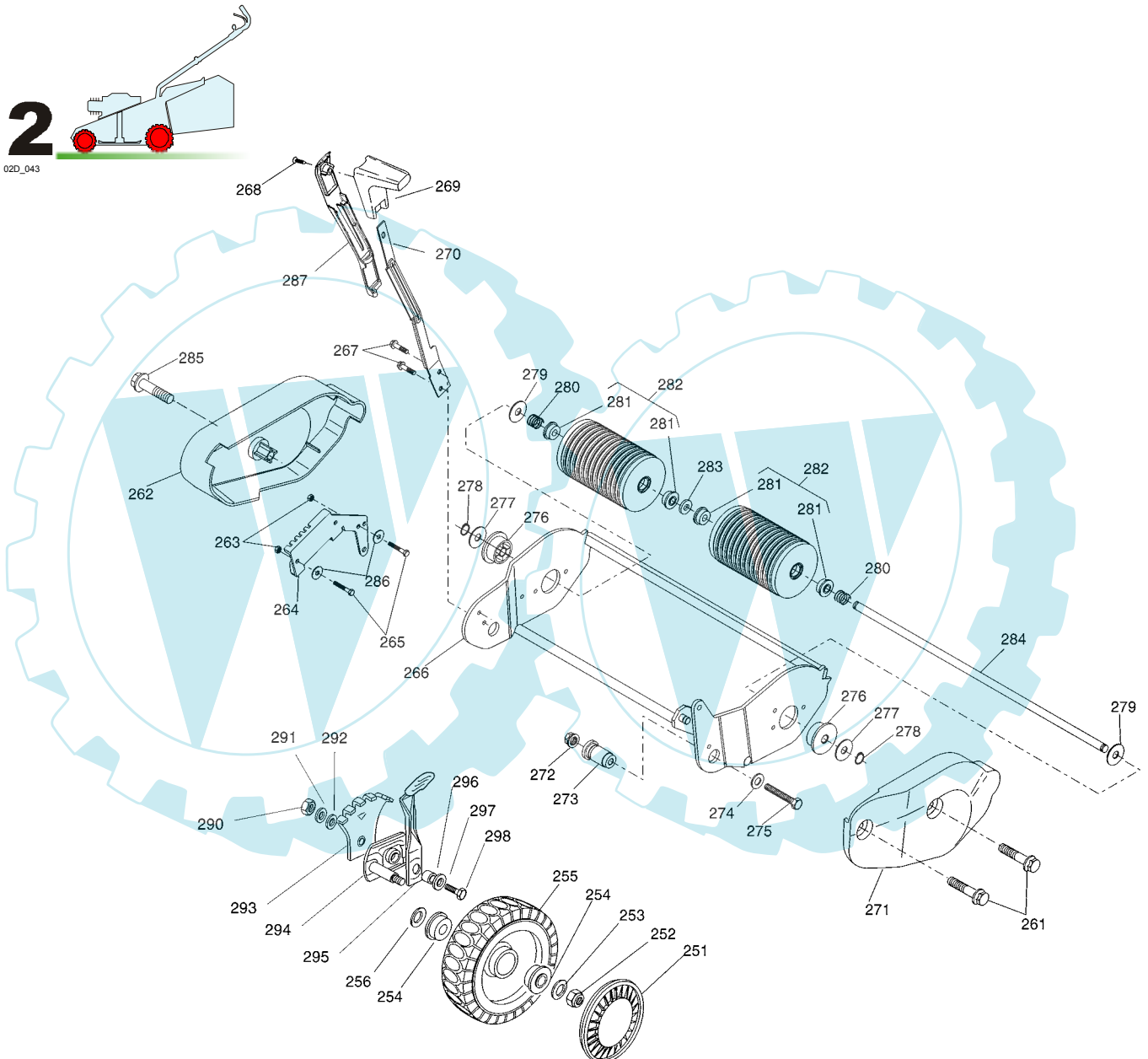
## TD 484 ROLLER



97

## GLOBAL GARDEN PRODUCTS

| Pos. | Code       | Q.ty | Descrizione       | Description    | Description         | Beschreibung         | Remarks    |
|------|------------|------|-------------------|----------------|---------------------|----------------------|------------|
| 157  | 81007080/0 | 1    | CAVO ACCELERATORE | CABLE, TROTTLE | CABLE, ACCELERATEUR | KABLE, BESCHLEUNIGER |            |
| 158  | 12815000/0 | 1    | VITE              | SCREW          | VIS                 | SCHRAUBE             |            |
| 159  | 14356703/0 | 1    | ETICHETTA         | LABEL          | ETIQUETTE           | ETIKETTE             | (B&S)      |
| -    | 14356702/0 | 1    | ETICHETTA         | LABEL          | ETIQUETTE           | ETIKETTE             | (HONDA)    |
| -    | 14360197/0 | 1    | ETICHETTA         | LABEL          | ETIQUETTE           | ETIKETTE             | (SUMEC)    |
| -    | 14356905/0 | 1    | ETICHETTA         | LABEL          | ETIQUETTE           | ETIKETTE             | (TECUMSEH) |



| Pos. | Code       | Q.ty | Descrizione          | Description          | Description         | Beschreibung            | Remarks |
|------|------------|------|----------------------|----------------------|---------------------|-------------------------|---------|
| 251  | 22110282/0 | 2    | COPRIMOZZO BIANCO    | HUB CAP WHITE        | COUVRE-MOYEU BLANC  | RADKAPPE WEIßE          |         |
| -    | 22110288/0 | 2    | COPRIMOZZO GIALLO    | HUB CAP YELLOW       | COUVRE-MOYEU JAUNE  | RADKAPPE GELBE          |         |
| -    | 22110300/0 | 2    | COPRIMOZZO GRIGIO    | HUB CAP GREY         | COUVRE-MOYEU GRIS   | RADKAPPE GRAU           |         |
| -    | 22110290/0 | 2    | COPRIMOZZO ROSSO     | HUB CAP RED          | COUVRE-MOYEU ROUGE  | RADKAPPE RÖTE           |         |
| 252  | 12155000/0 | 2    | DADO                 | NUT                  | ECROU               | MUTTER                  |         |
| 253  | 12521350/0 | 2    | ROSETTA              | WASHER               | RONDELLE            | SCHEIBE                 |         |
| 254  | 22122200/0 | 4    | CUSCINETTO           | BEARING              | COUSSINET           | LAGER                   |         |
| 255  | 81007336/0 | 2    | RUOTA SCOLPITA Ø 170 | WHEEL, KNOBBLY Ø 170 | ROUE SCULPTEE Ø 170 | RAD M. STOLLENPR. Ø 170 |         |
| 256  | 12530150/0 | 2    | ROSETTA ELASTICA     | SPRING WASHER        | RONDELLE ELASTIQUE  | ELASTISCHE SCHEIBE      |         |

## TD 484 ROLLER



97

## GLOBAL GARDEN PRODUCTS

| Pos. | Code       | Q.ty | Descrizione                 | Description               | Description             | Beschreibung            | Remarks |
|------|------------|------|-----------------------------|---------------------------|-------------------------|-------------------------|---------|
| 261  | 12735592/0 | 2    | VITE                        | SCREW                     | VIS                     | SCHRAUBE                |         |
| 262  | 22060201/0 | 1    | PROTEZIONE DX               | R PROTECTION              | PROTECTION D            | RECHTE SCHUTZ           |         |
| 263  | 12154330/0 | 2    | DADO                        | NUT                       | ECROU                   | MUTTER                  |         |
| 264  | 22735551/0 | 1    | SETTORE REGOLAZIONE ALTEZZA | SECTOR, HEIGHT ADJUSTMENT | SECTEUR REGLAGE HAUTEUR | SEKTOR, HÖHEVERSTELLUNG |         |
| 265  | 12789000/0 | 2    | VITE                        | SCREW                     | VIS                     | SCHRAUBE                |         |
| 266  | 81005109/0 | 1    | SUPPORTO ROLLER             | ROLLER SUPPORT            | SUPPORT ROLLER          | ROLLRHILTER             |         |
| 267  | 12735121/0 | 2    | VITE                        | SCREW                     | VIS                     | SCHRAUBE                |         |
| 268  | 12728680/0 | 1    | VITE                        | SCREW                     | VIS                     | SCHRAUBE                |         |
| 269  | 22399805/0 | 1    | MANOPOLINA                  | KNOB                      | POIGNÉE                 | GRIFF                   |         |
| 270  | 22321505/0 | 1    | LEVA REGOLAZIONE ALTEZZA    | LEVER, HEIGHT ADJUSTMENT  | LEVIER REGLAGE HAUTEUR  | HEBEL, HÖNEVERSTELLUNG  |         |
| 271  | 22060202/0 | 1    | PROTEZIONE SX               | L PROTECTION              | PROTECTION G            | LINKE SCHUTZ            |         |
| 272  | 12293201/0 | 2    | DADO                        | NUT                       | ECROU                   | MUTTER                  |         |
| 273  | 22785132/0 | 2    | SUPPORTO                    | SUPPORT                   | SUPPORT                 | HALTER                  |         |
| 274  | 12523060/0 | 2    | ROSETTA                     | WASHER                    | RONDELLE                | SCHEIBE                 |         |
| 275  | 12691700/0 | 2    | VITE                        | SCREW                     | VIS                     | SCHRAUBE                |         |
| 276  | 22034512/0 | 2    | BUSSOLA                     | BUSH                      | DOUILLE                 | BUCHSE                  |         |
| 277  | 22672151/0 | 2    | ROSETTA                     | WASHER                    | RONDELLE                | SCHEIBE                 |         |
| 278  | 12000957/0 | 2    | ANELLO BENZING              | BENZING                   | ANNEAU BENZING          | BENZING                 |         |
| 279  | 22672151/0 | 2    | ROSETTA                     | WASHER                    | RONDELLE                | SCHEIBE                 |         |
| 280  | 22430210/0 | 2    | MOLLA                       | SPRING                    | RESSORT                 | FEDER                   |         |
| 281  | 22122200/0 | 4    | CUSCINETTO                  | BEARING                   | COUSSINET               | LAGER                   |         |
| 282  | 81007400/0 | 2    | RULLO COMPLETO              | ASS.Y ROLLER              | ROLLER, ANS             | ROLLER                  |         |
| 283  | 12521370/0 | 1    | ROSETTA                     | WASHER                    | RONDELLE                | SCHEIBE                 |         |
| 284  | 22033360/0 | 1    | ASSE ROLLER                 | AXLE, ROLLER              | AXE ROLLER              | ACHSE, ROLLER           |         |
| 285  | 12735594/0 | 1    | VITE                        | SCREW                     | VIS                     | SCHRAUBE                |         |
| 286  | 12521331/0 | 2    | ROSETTA                     | WASHER                    | RONDELLE                | SCHEIBE                 |         |
| 287  | 22109722/0 | 1    | COPERTURA                   | COVER                     | COUVRE                  | KAPPE                   |         |
| 290  | 12293200/0 | 2    | DADO                        | NUT                       | ECROU                   | MUTTER                  |         |
| 291  | 12583500/0 | 2    | GROWER                      | GROWER                    | GROWER                  | FEDERRING               |         |
| 292  | 12523070/0 | 2    | ROSETTA                     | WASHER                    | RONDELLE                | SCHEIBE                 |         |
| 293  | 22735547/0 | 2    | SETTORE REGOLAZIONE ALTEZZA | SECTOR, HEIGHT ADJUSTMENT | SECTEUR REGLAGE HAUTEUR | SEKTOR, HÖHEVERSTELLUNG |         |
| 294  | 81005082/0 | 2    | SUPPORTO RUOTA              | SUPPORT, WHEEL            | SUPPORT ROUE            | HALTER, RAD             |         |
| 295  | 81003285/1 | 2    | LEVA REGOLAZIONE ALTEZZA    | LEVER, HEIGHT ADJUSTMENT  | LEVIER REGLAGE HAUTEUR  | HEBEL, HÖNEVERSTELLUNG  |         |
| 296  | 22171001/0 | 2    | DISTANZIALE                 | SPACER                    | ENTRETOISE              | DISTANZRING             |         |
| 297  | 12521350/0 | 2    | ROSETTA                     | WASHER                    | RONDELLE                | SCHEIBE                 |         |
| 298  | 12793701/0 | 2    | VITE                        | SCREW                     | VIS                     | SCHRAUBE                |         |

## TD 484 ROLLER

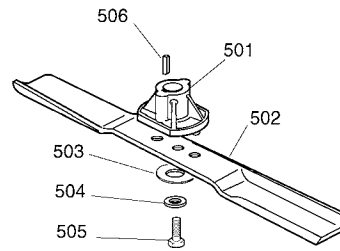
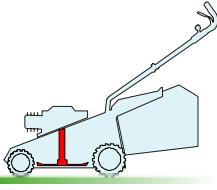


97

GLOBAL GARDEN PRODUCTS

5

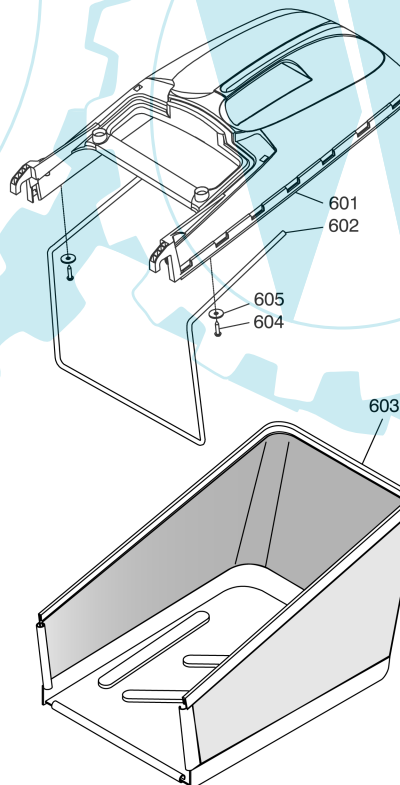
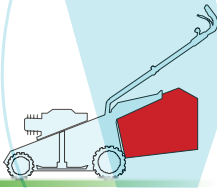
05D\_002



| Pos. | Code       | Q.ty | Descrizione       | Description    | Description      | Beschreibung    | Remarks |
|------|------------|------|-------------------|----------------|------------------|-----------------|---------|
| 501  | 22463012/1 | 1    | MOZZO             | HUB            | MOYEU            | HALTER          |         |
| 502  | 81004360/3 | 1    | COLTELLO STANDARD | BLADE STANDARD | LAME STANDARD    | MESSER STANDARD | (39 cm) |
| -    | 81004365/3 | 1    | COLTELLO STANDARD | BLADE STANDARD | LAME STANDARD    | MESSER STANDARD | (44 cm) |
| 503  | 22160400/0 | 1    | DISCO ELASTICO    | ELASTIC WASHER | DISQUE ELASTIQUE | FEDERSCHEIBE    |         |
| 504  | 12523080/0 | 1    | ROSETTA           | WASHER         | RONDELLE         | SCHEIBE         |         |
| 505  | 12735698/0 | 1    | VITE              | SCREW          | VIS              | SCHRAUBE        |         |
| 506  | 12139100/0 | 1    | LINGUETTA         | FEATHER        | CLAVETTE         | KEIL            |         |

6

06D\_012



| Pos. | Code       | Q.ty | Descrizione      | Description           | Description            | Beschreibung       | Remarks |
|------|------------|------|------------------|-----------------------|------------------------|--------------------|---------|
| 601  | 22486104/1 | 1    | SACCO, PARTE SUP | GRASS-BOX, UPPER PART | SAC, PARTIE SUPERIEURE | KORB, OBERTEIL     |         |
| 602  | 22608527/0 | 1    | RINFORZO INF     | STIFFENING LOWER      | RÉNFORCEMENT INF       | VERSTÄRKUNG UNTERE |         |
| 603  | 81002227/0 | 1    | SACCO, TELA      | BOX, FABRIC           | SAC, TOILE             | SACK, TUCK         |         |
| 604  | 12728680/0 | 2    | VITE             | SCREW                 | VIS                    | SCHRAUBE           |         |
| 605  | 12523050/0 | 2    | ROSETTA          | WASHER                | RONDELLE               | SCHEIBE            |         |